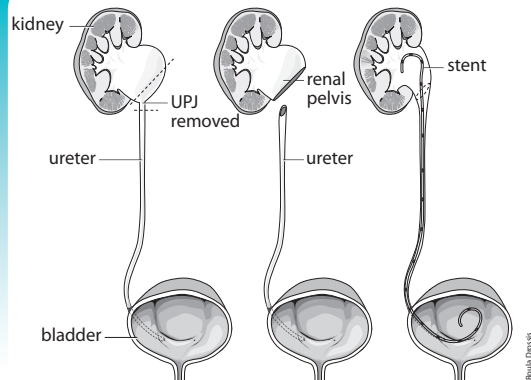


UPJ obstruction is repaired with an operation called a **pyeloplasty** done under general anesthesia (you are put to sleep). Traditionally, an incision was made in the flank through which the renal pelvis and ureter are exposed. The narrow UPJ is cut out or cut open and a wider connection is constructed. A temporary stent or nephrostomy tube may be placed. Patients may be in hospital for up to seven days and able to resume their usual activities within four to six weeks. This operation is successful in about 90% of cases.

Pyeloplasty



Today, in most occasions it is possible to perform the pyeloplasty by laparoscopy. A series of “keyhole” incisions are made in the abdomen through which a narrow video camera and operating instruments are used to reconstruct the UPJ. This operation, although technically challenging, allows a shorter hospital stay and recovery time.

Another alternative in adults is **endopyelotomy**, which involves making a cut through the area of obstruction in the UPJ using a scalpel, electric current or laser passed into the drainage system through a “scope”. In a **percutaneous endopyelotomy**, a small incision is made in the flank through which a scope is advanced

through the kidney into the renal pelvis to incise the UPJ. **Ureteroscopic endopyelotomy** involves passing a scope through the urethra, bladder and ureter to incise the UPJ. With either approach, a stent is required for several weeks postoperatively. These techniques may not be possible in all cases and have a success rate of about 70-80%.

If your kidney has very poor function, your urologist may recommend its removal (nephrectomy) rather than repair.

Follow-up

After UPJ obstruction is treated, follow-up can ensure that the affected kidney is functioning properly. This may involve periodic blood and urine tests, ultrasound and nuclear renal scans until it is clear that the problem has been corrected.

UPJ obstruction may cause blockage of urine drainage from a kidney. When necessary, effective surgery is available to correct the problem, relieve symptoms and preserve kidney function.

This publication is produced by



Canadian
Urological
Association

The Voice of Urology in Canada

The information in the publication is not intended to convey medical advice or to substitute for direct consultation with a qualified medical practitioner. The Canadian Urological Association disclaims all liability and legal responsibility howsoever caused, including negligence, for the information contained in or referenced by this brochure.

© 2014, Canadian Urological Association. All rights reserved.

Ureteropelvic Junction Obstruction

A ureteropelvic junction obstruction is a partial blockage of the drainage system of the kidney.



Your kidneys filter blood to eliminate waste products and excess water that are excreted in the urine. A drainage system carries urine from each kidney to the bladder where it is stored until emptying is appropriate. Each kidney drains into a **renal pelvis**, which funnels urine into a **ureter**, the long, narrow muscular tube that conducts urine to the bladder.

Your doctor has found a partial blockage of the connection of a renal pelvis with the ureter, the **ureteropelvic junction (UPJ)**. This **ureteropelvic junction obstruction** impedes drainage and causes urine to back up in the kidney leading to increased pressure, flank pain and, in some cases, kidney damage. Imagine a partially clogged sink drain: when water is running slowly, drainage is adequate, but when water is flowing more rapidly, it backs up.

Most often, this blockage is the result of an abnormality of kidney development occurring prior to birth (congenital). The muscle of the

obstructed ureteropelvic junction is poorly developed and, sometimes, replaced with scar tissue. Both kidneys are involved in 10% of cases. In some, the obstruction may have occurred after an injury or inflammation related to a kidney stone. Occasionally, a blood vessel crossing over the UPJ can contribute to blockage.

UPJ obstruction may be diagnosed at any age. Routine ultrasound during pregnancy can detect fullness of the developing child's renal pelvis (hydronephrosis). Some infants are found to have UPJ obstruction when abnormal swelling in the abdomen or flank is discovered or urinary infection develops. In adults, it may be identified during the investigation of intermittent flank or abdominal pain often made worse by drinking large volumes of fluid. Some patients develop bloody urine or stones in the affected kidney.

Investigation

Once UPJ obstruction is suspected, investigations are required to determine the exact site and severity of the blockage. Blood and urine tests assess overall kidney function and the possibility of infection.

Imaging studies are used to clarify the drainage system anatomy and assess the degree of obstruction. **Ultrasound** or **CT scan** will show fullness in the renal pelvis and any loss of functioning kidney tissue. Intravenous pyelography (IVP) involves the injection of contrast material into a vein followed by a series of x-rays. The "dye" is excreted by the kidneys outlining the drainage system and gives an indication of function.

A **nuclear renal scan** can evaluate kidney function more accurately. In some cases, a diuretic is given during the scan to promote increased urine production. The scanner will show increasing nuclear marker buildup in the kidney in the presence of obstruction while the marker washes rapidly out of a normal drainage system.

Your urologist may recommend a **cystoscopy and retrograde pyelography**. This involves passing a narrow visualizing instrument (scope) through the urine passage (urethra) into the bladder. The kidney drainage system is then filled from below with contrast material to allow detailed x-ray imaging.

The degree of blockage may vary from minimal to severe and, occasionally, it may come and go.

Treatment

In some cases, particularly in infants, UPJ obstruction may be mild and not require any treatment. Unless very severe, UPJ obstruction found in newborns often can be safely observed without treatment because, frequently, the blockage will resolve on its own as the child matures. Your urologist will recommend periodic monitoring with lab tests, ultrasound and nuclear kidney scans. A small daily dose of antibiotic may be advised in newborns to prevent urinary infection that could damage the kidney.

Treatment may be required when symptoms are bothersome or kidney function is impaired by the obstruction.

In some, temporary kidney drainage can be obtained with an internal or external drainage tube. A **ureteric stent** is an internal drain running from the renal pelvis to the bladder within the ureter, while a **nephrostomy tube** drains from the renal pelvis out through the flank into a bag. This can allow treatment of infection, preservation of kidney function or relief of pain while corrective surgery is being planned.

Corrective surgery aims to reconstruct a gradual tapering of the ureteropelvic junction to allow unobstructed funneling of urine from the renal pelvis to the ureter. Various surgical techniques are available to correct UPJ obstruction. Your urologist will recommend the procedure most suitable to your specific circumstances.

Ureteropelvic Junction Obstruction

